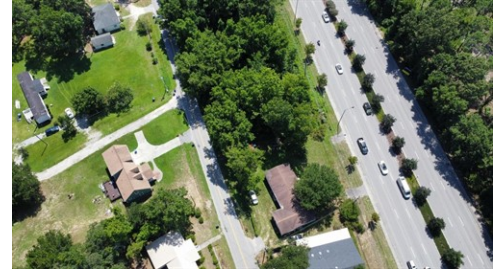




\$ 400,000



2440 Old Georgetown Rd, Mount Pleasant, SC 29466

- » MLS #: 24013295
- » Land | Lot: 14,375 ft²
- » More Info: 2440OldGeorgetownRdMountPleasant.IsForSale.com



Angela Miller
 (843) 990-8963
 (404) 276-6355
Angelamillerteam@gmail.com
<http://angelamillerteam.net/>



The American Realty
 318 N. Cedar St.
 Suite B
 Summerville, SC 29483
 (843) 990-8963

Discover the potential of this exceptional third-acre property, ideally located on the bustling Highway 17 corridor, directly across from the esteemed Boone Hall Farms. Nestled within the Old Georgetown Loop Office Area of the Mt. Pleasant Overlay District, this prime land offers unparalleled visibility and convenient access, making it a perfect location for businesses and investors. Currently zoned for office/professional uses, this versatile property offers a wide range of commercial possibilities, from farmers markets and assisted living facilities to child care centers, healthcare services hubs, and financial services offices. For a detailed list of permissible uses, please consult the Charleston County Zoning and Land Development Regulation Ordinance. Surrounded by a thriving community and innovative developments, this .35-acre lot offers an incredible opportunity to create a custom-built haven or a high-traffic commercial landmark. Its proximity to Long Point Road provides seamless access to major thoroughfares, ensuring a quick commute to pristine beaches. As Mt. Pleasant continues to grow, the desirability of this location for shopping, dining, and enjoying downtown Charleston's charm cannot be overstated. Envision establishing your dream project on this quiet street just off Highway 17, where your future success in this highly desirable area awaits. Don't miss out on this rare Mt. Pleasant land listing that offers

